



JIC040402

**Industry Standards**

UL 50 Listed, Types 4, 12 & 13  
CSA Certified, Types 12 & 13  
Meets NEMA/EEMAC Type 4, 12 & 13

UL Files E6924, E64791

CSA File LL66078

**FEATURES-SPECIFICATIONS**

**Applications**

Fabricated to meet strict automotive requirements. Wiegmann flange FTC (flange trough collar) enclosures offer unique tub flanges that maximize internal protection. Designed to provide protection from dust, dirt, oil, and water. Optional sub panels sold separately.

**Construction**

- 16 gauge steel body, 16 or 14 gauge steel door
- Special 360 degree tub flange design diverts contaminants away from tub opening
- Continuous hinge
- Continuously welded seams ground smooth, less knockouts or holes.
- Closed cell neoprene oil resistant gasket
- External mounting plates, top and bottom of enclosure.
- Weldnuts are provided for mounting optional panels
- With special quick release latches
- Grounding provisions provided

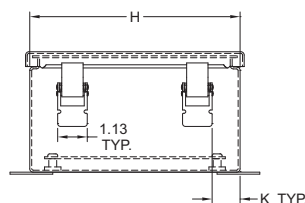
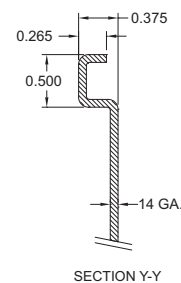
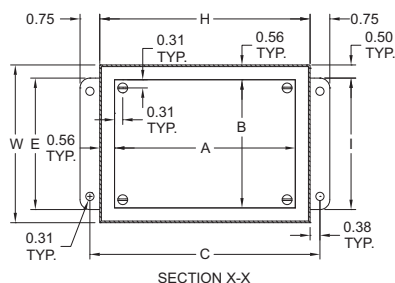
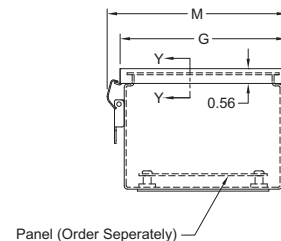
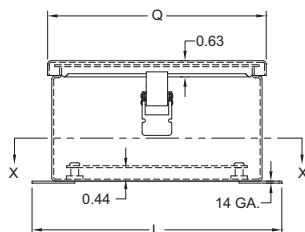
**Finish**

- ANSI 61 gray polyester powder inside and out
- Optional back panels are white polyester powder
- Optional "G" panels have a conductive finish (See page I2)

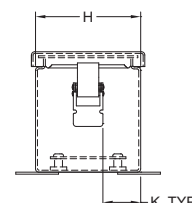
**Accessories**

- Back panels (reference tables)
- Terminal kits
- See pages J1-J22

CATALOG NUMBER	BODY/DOOR STEEL GAUGE	BACK PANEL CATALOG NUMBER		ENCLOSURE SIZE H X W X D
		WHITE	"G"	
B0604045CHFTC	14/14	P0604	P0604G	6.00x4.00x4.54 (152x102x115)
B0606045CHFTC	14/14	P0606	P0606G	6.00x4.00x4.54 (152x102x115)
B0806045CHFTC	14/14	P0806	P0806G	8.00x6.00x4.54 (203x152x115)
B100845CHFTC	14/14	P1008	P1008G	10.00x8.00x4.54 (254x203x115)
B121055CHFTC	14/14	P1210	P1210G	12.00x10.00x4.54 (305x254x115)
B141265CHFTC	14/14	P1412	P1412G	14.00x12.00x6.54 (356x305x166)
B1614065CHFTC	14/14	P1614	P1614G	16.00x14.00x6.54 (406x356x166)



VIEW SHOWING CLAMP POSITION WHEN "H" EQUALS 8.00" OR MORE



VIEW SHOWING CLAMP POSITION WHEN "H" IS LESS THAN 8.00"